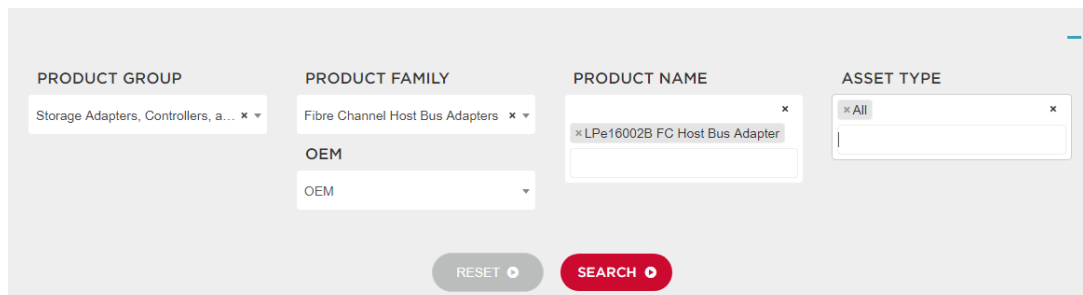


Emulex Lpe16002B-M6 升级固件步骤

出厂固件版本发布日期为 2016 年 2 月 24 日，版本号为 11.0.243.11；最新固件为发布日期是 2018 年 2 月 7 日，版本号为 11.4.204.25；

1. 首先到 <https://www.broadcom.com/support/download-search> 博通官网下载对应系统的管理程序



PRODUCT GROUP: Storage Adapters, Controllers, a...
PRODUCT FAMILY: Fibre Channel Host Bus Adapters
PRODUCT NAME: LPe16002B FC Host Bus Adapter
ASSET TYPE: All
RESET SEARCH

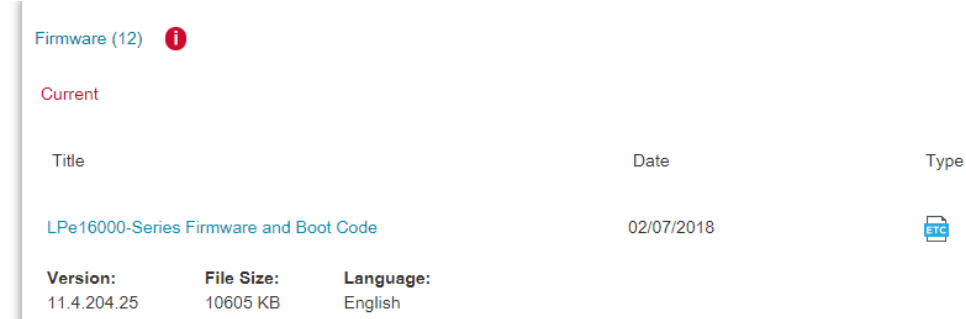
2. 在搜索结果中，选择管理工具：



Management Software and Tools (249)

Version:	File Size:	Language:	Compatibility	Date
11.4.204.11-1	76750 KB	English	Windows Server 2016; Windows Server 2012 R2; Windows Server 2012; Windows 10; Windows 8.1; Windows 8	10/23/2017

3. 选择 Firmware 下载最新的固件：



Firmware (12)

Title	Date	Type
LPe16000-Series Firmware and Boot Code	02/07/2018	ETC

Version: 11.4.204.25 File Size: 10605 KB Language: English

4. 进行软件安装后，运行：

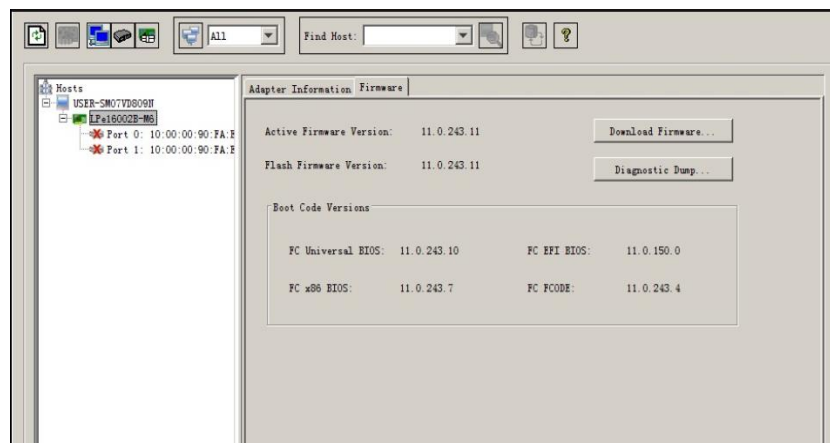
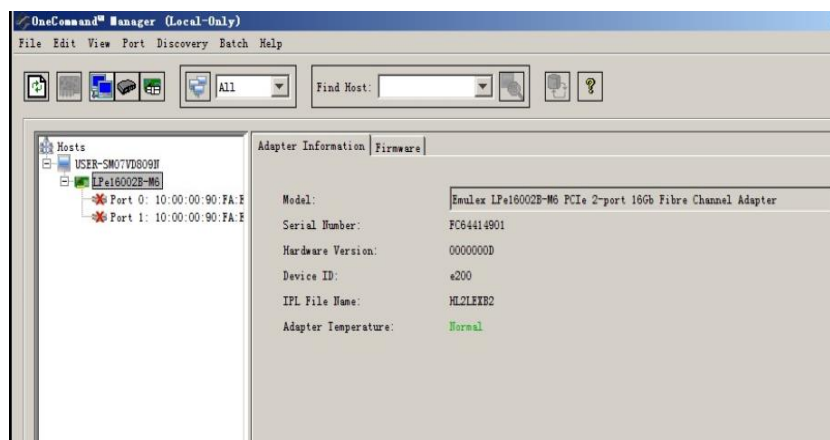


OneCommandTM MANAGER

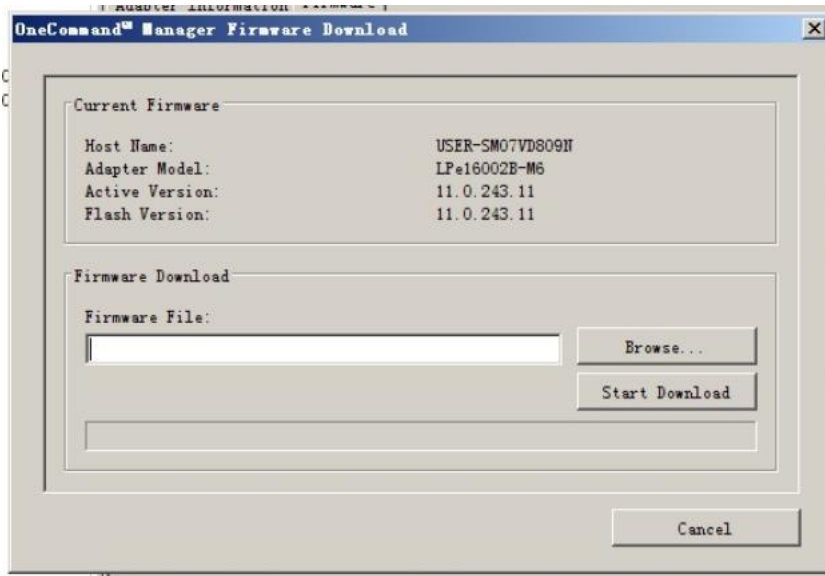
Copyright 2002-2016 Avago Technologies. All rights reserved.

Version: 11.2.156.23

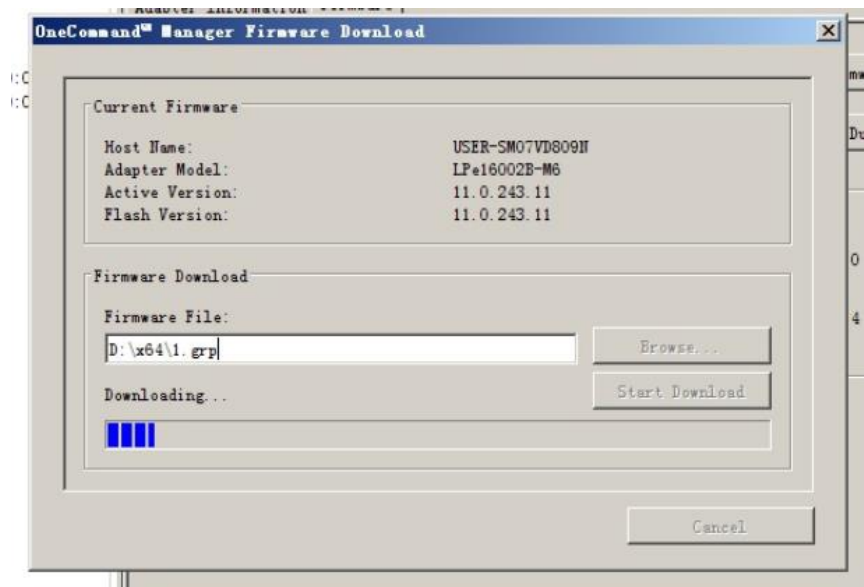
Loading OCManger...



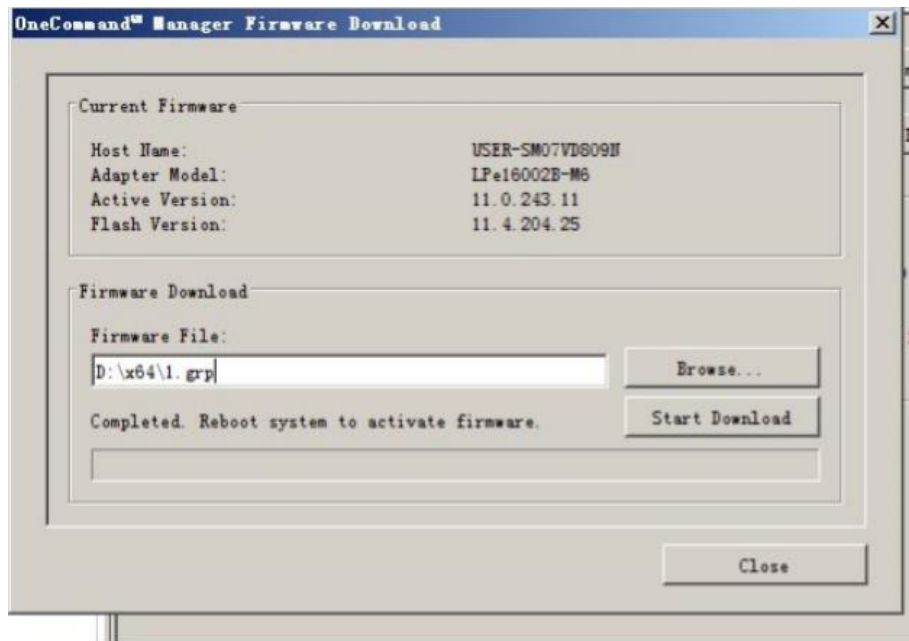
5. 单击下载固件按钮，浏览到下载的最新固件，并提交；



6. 系统进行更新固件过程



7. 更新完成，系统提示重启生效



8. 重启后，显示新的固件版本

